

NETGEAR RangeMax™ Wireless PCI Adapter WPN311

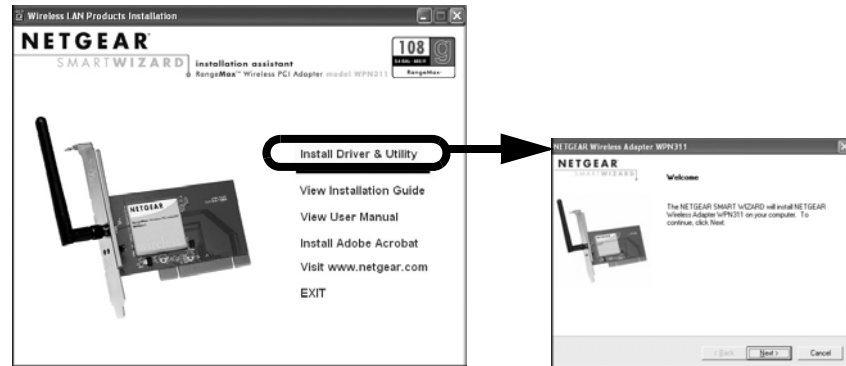
These basic setup instructions assume that you will connect to an access point using the default security options. Please refer to the online help and the *Reference Manual* on the *Resource CD* for instructions on configuring wireless security, Ad-hoc mode, or advanced options.

Estimated Completion Time: 15-25 minutes.

Windows XP

1. FIRST, INSTALL THE WPN311 SOFTWARE.

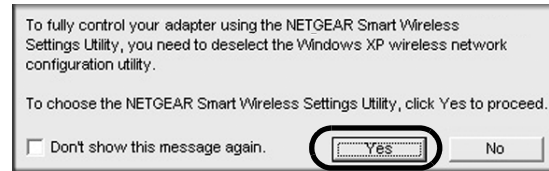
- Power on your computer, let the operating system boot up completely, and log in as needed. Insert the *Resource CD* for the WPN311 into your CD drive. The CD main page will load. If this page does not automatically load, browse to the CD, and double-click on **autorun.exe**.



- Click the **Install Driver and Utility** link to run the Smart Wizard - Install Assistant.
- Follow the Smart Wizard - Install Assistant steps.
- Click **Finish** when done, and if prompted restart your computer.

2. NEXT, INSTALL THE WPN311 WIRELESS PCI ADAPTER.

- Shut down the PC and remove the power cord from the PC. Insert the WPN311 Wireless PCI Adapter into an available PCI slot. Connect the antenna to the adapter and position the antenna to the up position. Reconnect the power cord and reboot the computer.
- After a short delay, the Found New Hardware Wizard displays. Select Install the software automatically (Recommended) and click **Next**.
Note: If the Windows XP logo testing warning appears, click Continue Anyway to proceed.
- You will be prompted to choose the country where you are located. Select your location from the list.
- You also will be prompted to enable the NETGEAR Smart Wireless Settings Utility configuration utility.



Click **Yes** to accept this option.

If you choose No, you must read the Windows XP documentation to learn how to use the Windows XP wireless network configuration utility.

- Click **Finish** to complete the installation. You will see the WPN311 system tray icon on the lower right portion of the Windows task bar.



3. NOW, CONFIGURE YOUR WPN311 AND SAVE THE PROFILE.

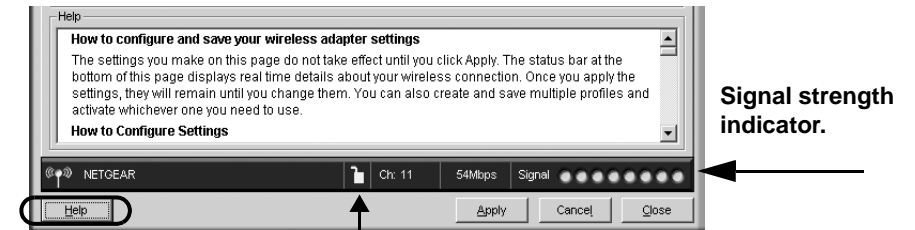
- Determine the current settings for your wireless access point, including the case-sensitive SSID and security settings (if any):
 - WEP — 64 or 128 bit, Passphrase (case-sensitive) or Key # with hex key
 - WPA-PSK — Passphrase (case-sensitive)
- Click the WPN311 icon in the Windows system tray to view the WPN311 Settings tab page.



- Change the Network Name SSID and security settings to match your wireless access point. For WEP, select the Use WEP Encryption checkbox. For WPA-PSK, click the Advanced button.
Tip: To view the available wireless networks, use the drop-down list or the Networks tab and choose the one you want.
- Click **Apply** to activate the connection.
Tip: Create *work* and *home* profiles. Then, activate whichever one you need for your current location.

4. FINALLY, VERIFY WIRELESS NETWORK CONNECTIVITY.

- Use the status information at the bottom of the utility to verify your wireless network connection. Click the Help button to view the online help.



Help button

Unlocked: the wireless network does not use security
Locked: the wireless network uses security

Note: The status bar at the bottom of the utility reports the speed of your connection. 108 Mbps speed is only possible when your wireless network has a 108 Mbps access point such as in the NETGEAR WPN824 RangeMax™ Wireless Firewall Router or NETGEAR WGT634U 108 Mbps Wireless Router.

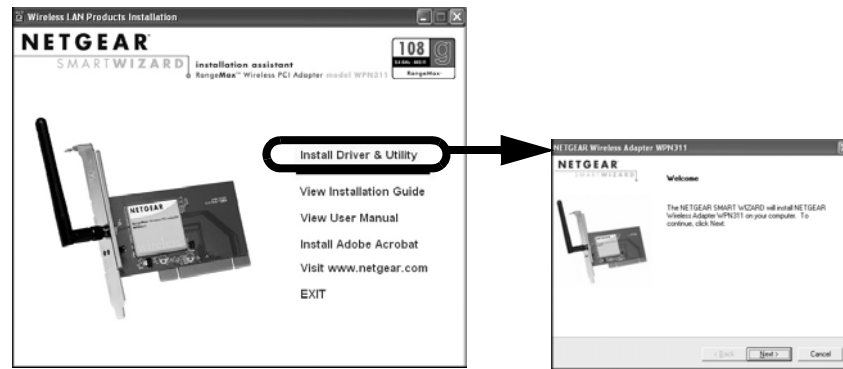
- WPN311 Windows system tray icon: green or yellow indicates a working connection; red indicates no connection.
- WPN311 LEDs: alternating blinking means attempting to connect; blinking together indicates a good connection; off means the WPN311 is not seated.
- Verify connectivity to the Internet by opening a browser or verify access to network resources such as files and printers.

Windows 2000

1. FIRST, INSTALL THE WPN311 SOFTWARE.

Note: Windows 2000 may require you to be logged on with administrator rights.

- a. Power on your computer, let the operating system boot up completely, and log in as needed.
- a. Insert the WPN311 *Resource CD* into your CD drive. The CD main page shown below will load. If this page does not automatically load, browse to the CD, and double-click on **autorun.exe**.



- b. Click the **Install Driver and Utility** link to run the Smart Wizard - Install Assistant.
- c. Follow the Smart Wizard - Install Assistant steps.
- d. Click **Finish** when done, and if prompted restart your computer.

2. NEXT, INSTALL THE WPN311 WIRELESS PCI ADAPTER.

- a. Shut down the PC and remove the power cord from the PC. Insert the WPN311 Wireless PCI Adapter into an available PCI slot. Connect the antenna to the adapter and position the antenna to the up position. Reconnect the power cord and reboot the computer.

- b. After a short delay, the Found New Hardware Wizard displays. Select Install the software automatically (Recommended) and click **Next**.
Note: If Windows 2000 displays a Digital Signature Not Found warning, click **Yes** to continue the installation.
- c. Follow the Found New Hardware Wizard steps, click **Finish** when done, and if prompted, restart your computer.
- d. Next, you will be prompted to choose the country where you are located. Select your location from the list.
- e. You will now see the WPN311 system tray icon in the lower right area of the Windows task bar.



3. NOW, CONFIGURE YOUR WPN311 AND SAVE THE PROFILE.

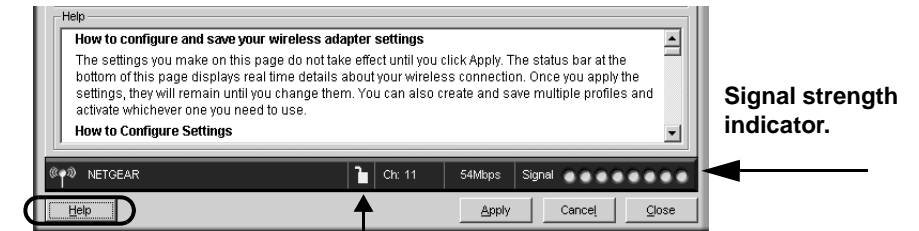
- a. Determine the current settings for your wireless access point, including the case-sensitive SSID and security settings (if any):
 - WEP — 64 or 128 bit, Passphrase (case-sensitive) or Key # with hex key
 - WPA-PSK — Passphrase (case-sensitive)
- b. Click the WPN311 system tray icon to view the Settings tab page:



- c. Change the Network Name SSID and security settings to match your wireless access point. For WEP, select the Use WEP Encryption checkbox. For WPA-PSK, click the Advanced button.
Tip: To view the available wireless networks, use the drop-down list or the Networks tab and choose the one you want.
- d. Click **Apply** to activate the connection.
Tip: Create *work* and *home* profiles. Then, activate whichever one you need for your current location.

4. FINALLY, VERIFY WIRELESS NETWORK CONNECTIVITY.

- Use the status information at the bottom of the utility to verify your wireless network connection. Click the Help button to view the online help.



Help button

Unlocked: the wireless network does not use security
Locked: the wireless network uses security

- Note:** The status bar at the bottom of the utility reports the speed of your connection. 108 Mbps speed is only possible when your wireless network has a 108 Mbps access point such as in the NETGEAR WGT624 108 Mbps Wireless Firewall Router or NETGEAR WGT634U 108 Mbps Wireless Router.
- WPN311 Windows system tray icon: green or yellow indicates a working connection; red indicates no connection.
 - WPN311 LEDs: alternating blinking means attempting to connect; blinking together indicates a good connection; off means the WPN311 is not seated.
 - Verify connectivity to the Internet by opening a browser or verify access to network resources such as files and printers.

Technical Support

After completing the Smart Wizard configuration assistant, register your product at <http://www.NETGEAR.com/register>. Registration is required before you can use our telephone support service.

NETGEAR, INC. Support Information

Phone: 1-888-NETGEAR (For US & Canada only) - 24 x 7 phone support. See the Support Information card for other countries.

© 2005 by NETGEAR, Inc. All rights reserved. NETGEAR is a registered trademark of NETGEAR, Inc. in the United States and/or other countries. Other brand and product names are trademarks or registered trademarks of their respective holders. Information is subject to change without notice.



201-10428-01

February 2005